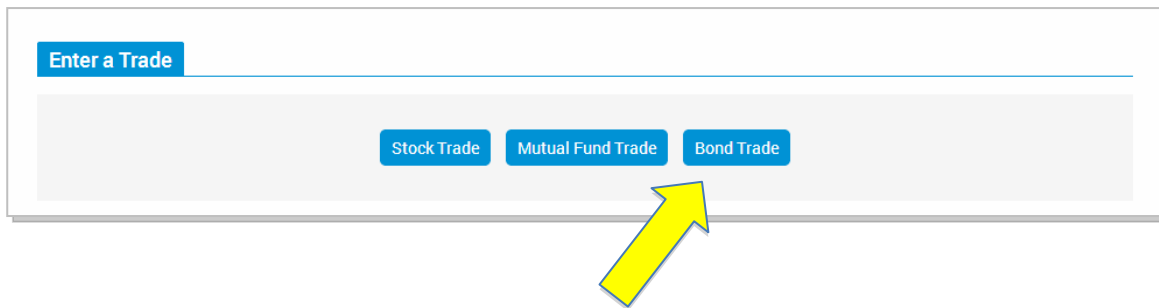


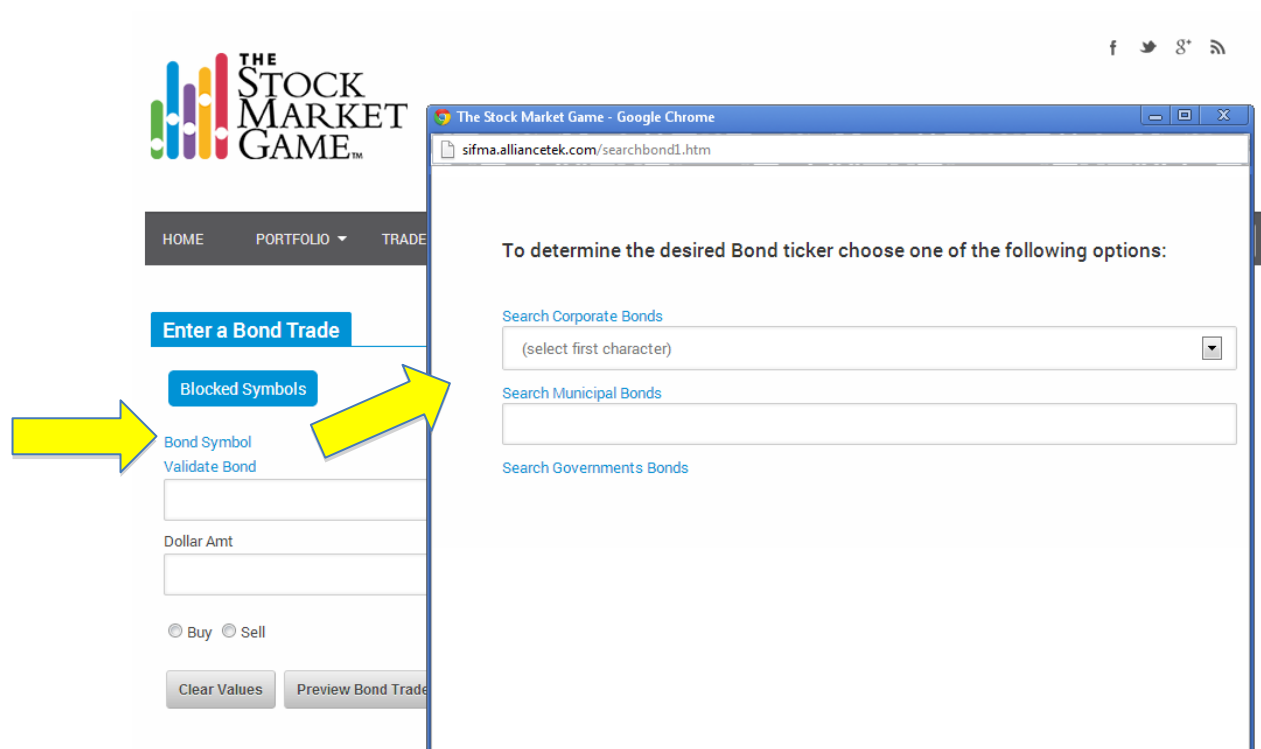
# Buying Bonds the SMG Way



Select Bond Trade from the **Enter A Trade** page.

On the **Bond Trade** screen, click Bond Symbol to open a pop-up window. This window asks you "To determine the desired Bond ticker..."

Decide the type of bond you want to buy: Corporate, Municipal, or Treasuries.



FOUNDATION



invest it FORWARD

## Buying Corporate & Treasury Bonds

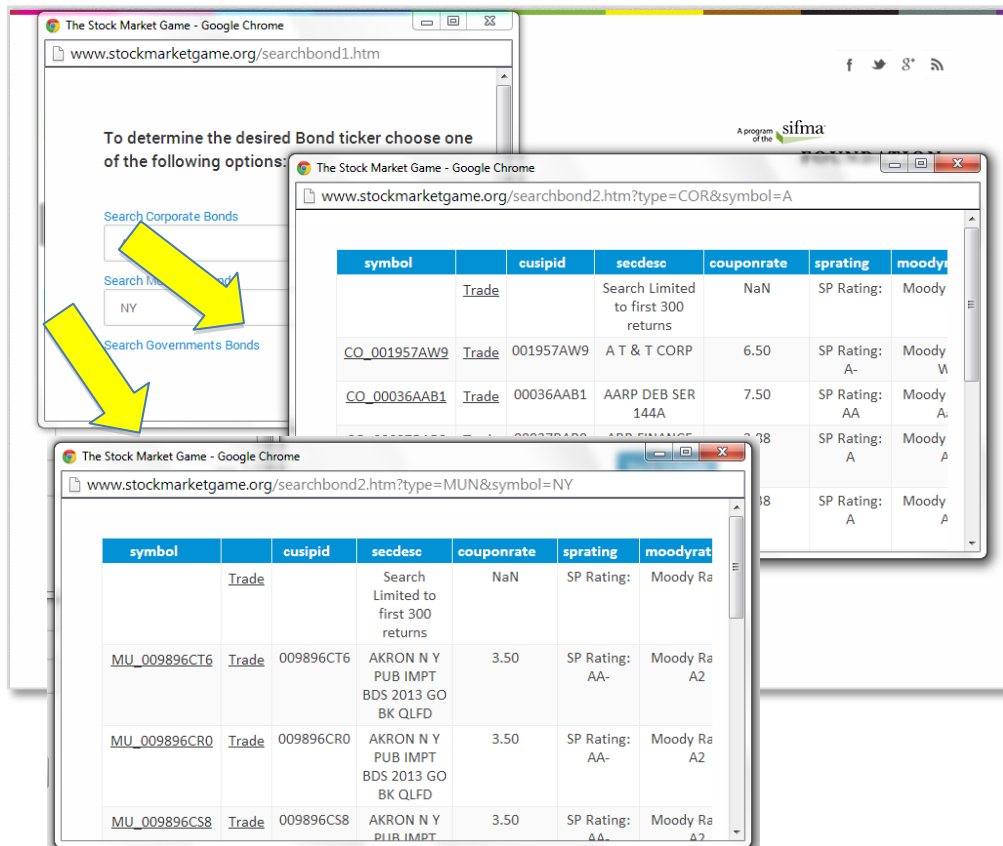
To buy a corporate bond select the first initial of the company issuing the bond from the drop down menu and then click [Search Corporate Bonds](#). Click the 12-character SMG ticker to the left of a bond to see its quote. Click [Trade](#) to buy the bond.

To buy a Treasury bond, select the agency issuing the bond from the drop down menu and then click [Search Treasuries](#). Click the 12-character Symbol to the left of a bond to see its quote. Click [Trade](#) to buy the bond.

## Buying Municipal Bonds

To buy a municipal bond, enter the state who has issued the bonds you wish to buy and then click [Search Municipal Bonds](#).

Click the 12-character SMG ticker to the left of a bond to see its quote. Click [Trade](#) to buy the bond.



FOUNDATION

